

ON AND OFF THE BEATEN TRACK

1,000 PLACES TO SEE BEFORE YOU DIE

NEW YORK TIMES
#1 BESTSELLER



A TRAVELER'S LIFE LIST

by PATRICIA SCHULTZ

THE WORLD'S WONDERS: A BALLOON SAFARI OVER MASAI MARA
♦ THE TASMAN GLACIER ♦ SAILING THE GRENADINES ♦
THE HIGHLAND GAMES AT BRAEMAR ♦ CANYON DE CHELLY
♦ GUBBIO ♦ OAXACA'S SATURDAY MARKET ♦ (continued on back cover)

**"At last, a book that tells you
what's beautiful, what's fun
and what's just unforgettable—
everywhere on earth."**—*NEWSWEEK*



(continued from front cover) CLIMBING KILIMANJARO ♦ IPANEMA BEACH ♦
THE ISLAND OF RHODES ♦ BOTSWANA'S OKAVANGO DELTA ♦ THE
PUSHKAR CAMEL FAIR ♦ EXPLORING THE BACKWATERS OF KERALA ♦
THE BUDDHAS OF BOROBUDUR ♦ MESA VERDE'S CLIFF DWELLINGS

AROUND THE WORLD,
continent by continent,
here is the best the
world has to offer: 1,000
places guaranteed to give
travelers the shivers. Sacred
ruins, grand hotels, wildlife
preserves, hilltop villages,
snack shacks, castles,
festivals, reefs, restaurants,
cathedrals, hidden islands,
opera houses, museums,
and more. Each entry tells
exactly why it's essential
to visit. Then come the
nuts and bolts: addresses,

websites, phone and fax
numbers, best times to visit.
Stop dreaming and get
going.

PATRICIA SCHULTZ
is the co-author of *MADE IN ITALY*.
A former writer for *Frommer's*,
Berlitz, and *Access* travel guides,
she is now a freelance travel writer,
and her articles
have appeared
in *Condé*
Nast Traveler,
Departures, and
Harper's Bazaar.



A 1,000... BEFORE YOU DIE™ BOOK

BOOKLAND EAN



9 780761 104841

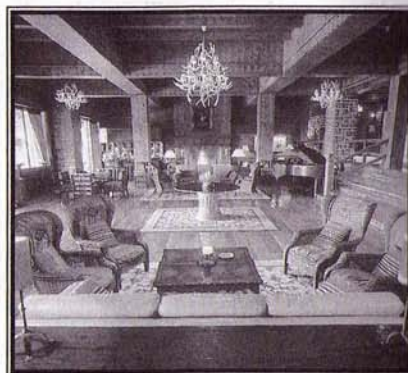
5 1895 >



WORKMAN PUBLISHING • NEW YORK
ISBN-10: 0-7611-0484-4 • \$18.95 U.S./\$28.95 CAN.
www.workman.com/1000places

Patagonia's Nahuel Huapi National Park, where you'll find some of the world's most dramatic peaks. And tucked away here in Argentina's largest and oldest national park is the Llao Llao Hotel, uniquely situated on 40 spectacular private acres. The hotel is in perfect harmony with its Andean location: There are ethnic fabrics, open fireplaces, and gleaming cypress logwork, all in an elegant hunting-lodge atmosphere—and everywhere, those views. Built in 1937 on the island-studded glacial Lake Nahuel Huapi (where Argentina's record salmon weighed in at 35 pounds), the Llao Llao has recently been resuscitated after having been closed for fifteen years. Privatized and impeccably renovated, it is once again one of the stellar hotel-resorts of South America, with a new 18-hole golf course and lakeside tennis courts for guests who visit at the height of the summer, and nearby Bariloche's sixteen ski runs for those who come in the austral winter. The cable car ride to the 7,000-foot peak of the Cerro Cathedral is breathtaking in any season.

WHAT: town, experience, hotel. **BARILOCHE:** Lake District, 2 hours from Buenos Aires



Rustic comfort in the lobby of the Llao Llao

by plane. **CIRCUITOS GRANDE AND CHICO:** can be booked through local tourist agencies or undertaken independently. **LLAO LLAO HOTEL & RESORT, GOLF SPA:** 15 miles/24 km from Bariloche. Tel 54/29-4444-8530, fax 54/29-4444-5781; llaollao@datamarkets.com.ar; www.llaollao.com. **Cost:** doubles from \$195 (low season), from \$242 (high season). **BEST TIMES:** Jun–Aug for skiing; summer is Dec–Mar.

A Breathtaking Train, a Relaxing Respite

EL TREN A LAS NUBES AND ESTANCIA EL BORDO DE LAS LANZAS

Salta, Argentina

Salta's stunning countryside is dotted with pre-Columbian ruins, artisan villages, and deep, mineral-streaked, polychrome *quebradas* (ravines) carved by rivers running down the snow-draped Andes. Through this eerily

eroded area by the Argentina-Chile border, the seasonal El Tren a las Nubes (Train to the Clouds) makes an unforgettable high-altitude, high-adrenaline trip that is on the

must-do list of all train buffs. The fifteen-hour trip—not for the faint of heart—leaves from Salta, one of the best-preserved colonial cities in Argentina. A magnificent engineering

achievement, the track was finished only in 1948; it includes a harrowing series of switchbacks and tunnels, and crosses dozens of iron bridges and viaducts. The highlight is the 200-foot-high viaduct that crosses the La Polvorilla desert canyon before the train's turnaround point in San Antonio de los Cobres, an old Indian mining town 13,000 feet above sea level. The return trip may induce a case of scenery overload—a good time for a siesta.

Recharge any frayed nerves at the area's premier *estancia*, El Bordo de las Lanzas. After the revered General Martín Miguel de Güemes led local gauchos in several successful battles against the Spanish royalists in the early 1800s, he would rest up at this *estancia*—even then a nurturing hideaway. Bordered by Chile and Bolivia and framed by the foothills of the Andes, the northwestern Salta Province is a center for farming and livestock, and the *estancia*'s 11,000 acres are dedicated to sugarcane, tobacco, sunflowers, and raising zebu cattle and the famous *paso*

peruano horses that are available for guests' use. Big, traditional meals based on regional specialties, using beef and ingredients from the estate, are proudly hosted by the gregarious Arias family of twelve, who make sure that their elegant 18th-century landmark estate provides the finest *estancia* experience in the region.

WHAT: experience, hotel. **EL TREN A LAS NUBES:** 15-hour round-trip leaves 7 A.M. daily from Salta (book ahead). **How:** contact La Veloz Turismo, tel 54/38-7401-2000, fax 54/38-7401-2001; trenlasnubes@lavelozturismo.com.ar; www.lavelozturismo.com.ar. **Cost:** \$70 per person, includes lunch on board. **When:** Apr–Nov. **ESTANCIA EL BORDO DE LAS LANZAS:** 15 miles/24 km south of Jujuy airport (2-hour Buenos Aires–Jujuy flight about \$115 round-trip). Tel 54/38-7490-370; bordlanz@cpsarg.com. **Cost:** \$100 per person, double occupancy, includes all meals and use of horses. **BEST TIMES:** Apr–May, Oct–Nov. **Semana Salta** (Salta Week) in Jun is a popular gaucho festival.

The Little Mother of Lake Titicaca

COPACABANA

Bolivia

This is the original Copacabana—not the beach in Rio de Janeiro, but a sunny little town on the southern shores of Lake Titicaca (considered to be the cradle of the Inca civilization, the “womb of the world”). One

of the most important Roman Catholic pilgrimage sites in South America, Copacabana's 400-year-old cathedral houses the shrine of the Indian Virgin, the Black Madonna, who is the beloved patron of Bolivia. The famous dark wood statue was believed to have been responsible for a spate of miracles since being carved by the native artist Tito Yunpanqui in 1592. Early Spanish Catholic influences are evident in the shrine's majestic gilded altar

and the gem-encrusted robe worn by the gold-crowned statue of the Virgin. Set between two hills, the whitewashed church offers good views of the lake and town, but for the best vista, hike the extra mile to the replica of Calvary Hill, El Cerro Calvario, especially at sunset.

WHAT: town. **WHERE:** 4 hours by car and hydrofoil, crossing at Huatjata, north of La Paz on the coast of Lake Titicaca. **HOW:** 1-day and